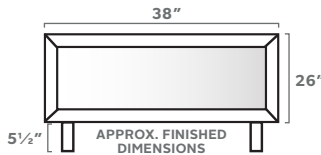


SAFETY SHIELD



MATERIALS

- 24x36" Plexiglass (1)
- 2x6 4' Douglas Fir (1)
- 2x2 8' Utility Pine (2)
- 2½" Trim Head Screws (4)
- Wood Glue
- Paint or Stain
- Sandpaper



ASSEMBLY TOOLS

- Table Saw
- Miter Saw
- Router
- Pin Nailer
- Drill/Driver/Screwdriver
- Tape Measure
- Pencil
- Paint/Foam Brush

NOTE:

If you plan on sanding, staining, or painting your Safety Shield, it would be best to do so before assembling it.



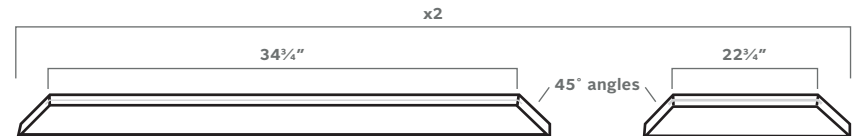
STEP ONE

Dado the center of the 2x2 boards with two saw kerfs, or about 3/16" wide x 3/4" deep and route edges with round over bit.



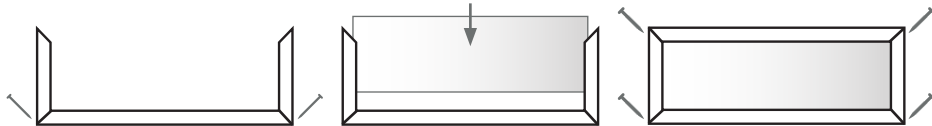
STEP TWO

Cut the frame materials from the 2x2 boards.



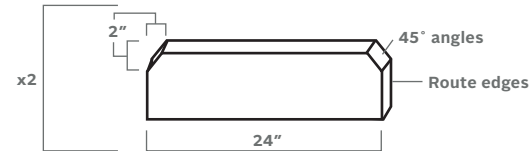
STEP THREE

Glue, pin nail, and assemble one long side and two short sides. Insert the plexiglass panel. Install fourth side. Add one 2½" trim head screw in each corner.



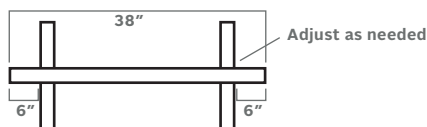
STEP FOUR

Make legs by cutting two 24" pieces of 2x6 as follows:

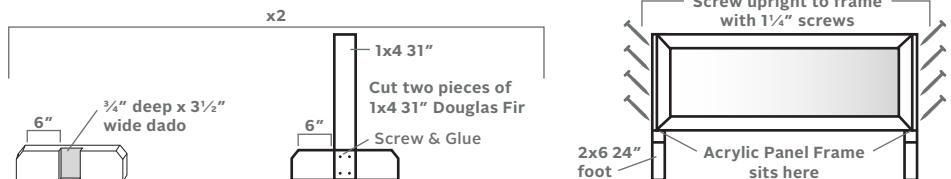


STEP FIVE

Attach the frame panel to the legs at approx. 6" in on the 2" side of the legs.



OPTION FOR ADDITIONAL STRENGTH



NOTES:
